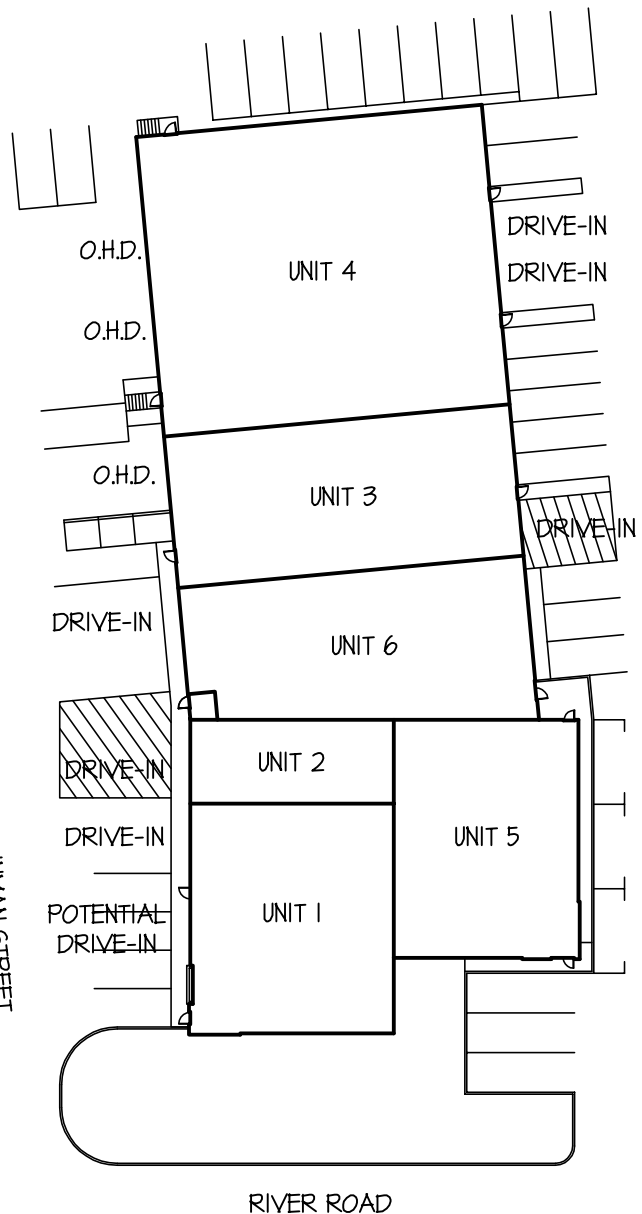
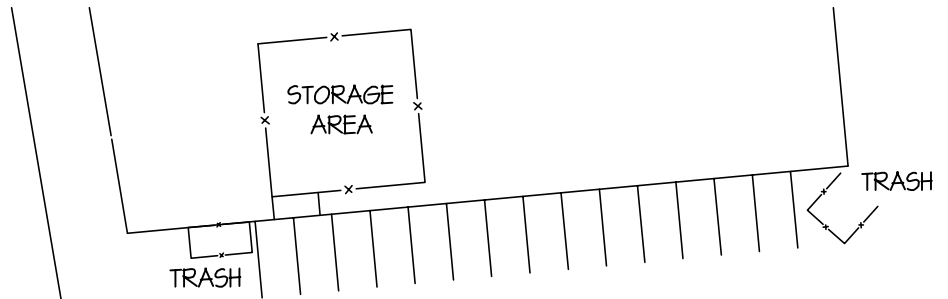


2601 River Road Cinnaminson, New Jersey



**One Underwood Court, P.O. Box 1605
Delran, New Jersey 08075-0117
(856) 764-2600
E-mail: leasing@whitesellco.com**



FEATURES:

- 21,496 SQ. FT. TOTAL
- ELECTRICAL SERVICE:
 - 1400 AMP5 @ 120/240 VOLTS-1 PHASE
- MECHANICAL SERVICE:
 - GAS HEAT
 - OFFICE AIR CONDITIONED
- CLEAR HEIGHT: 14'
- (2) 8'-0" x 10'-0" DOCK DOORS
- (1) 10'-0" x 10'-0" DOCK DOOR
- (2) 18'-0" x 14'-0" DRIVE-IN DOORS
- (3) 10'-0" x 10'-0" DRIVE-IN DOORS
- (1) 12'-0" x 14'-0" DRIVE-IN DOOR
- POTENTIAL 18'-0" x 14'-0" DRIVE-IN DOOR
- PUBLIC WATER & SEWER
- 48 PARKING SPACES
- ZONING: LI (LIGHT INDUSTRIAL)

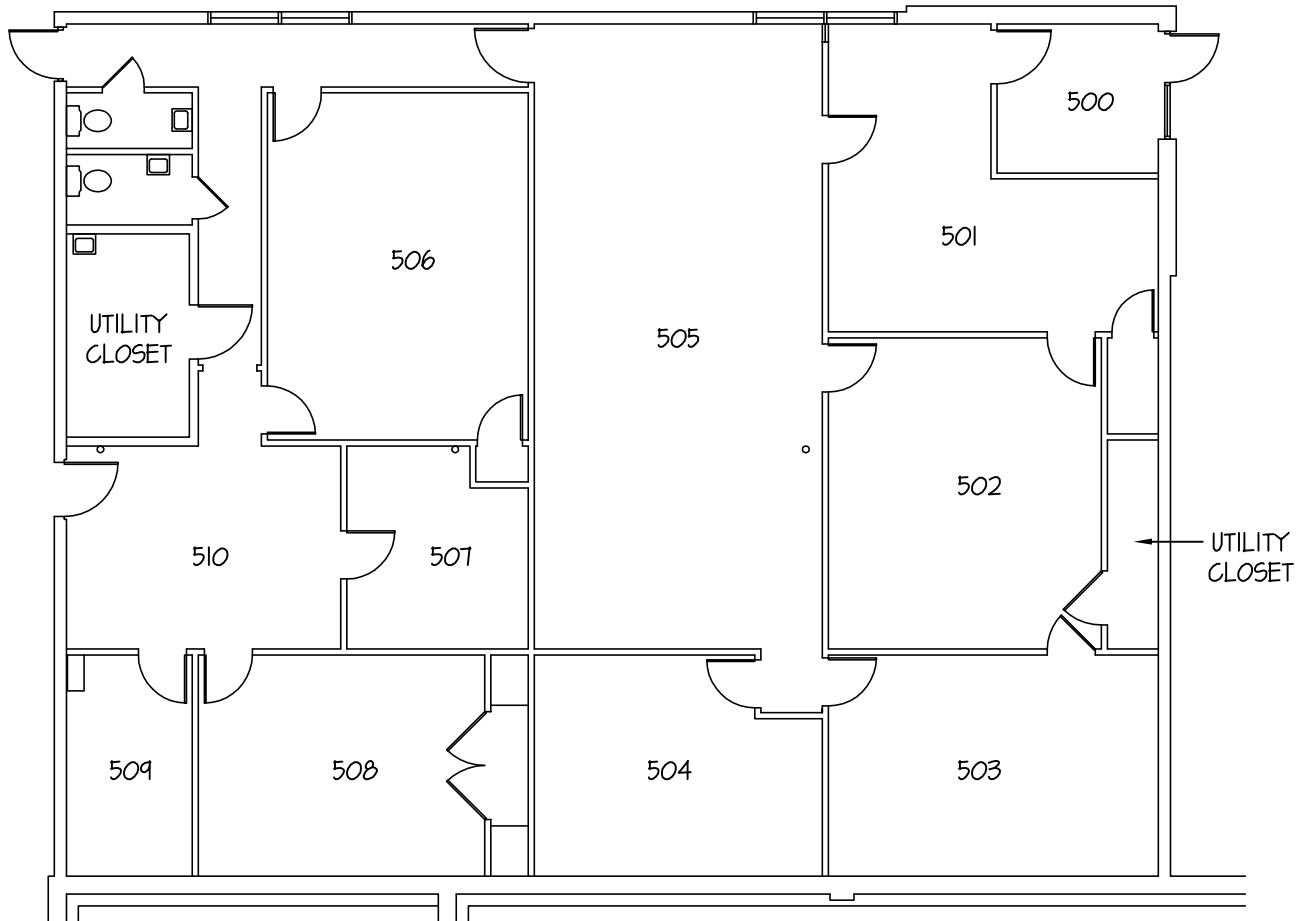


Whitesell

One Underwood Court, Delran, New Jersey 08075
 Phone: (856) 764-2600 Web: www.whitesellco.com

UNIT No.	DATE:	SCALE:
SITE	02/22/13	1" = 50'

**2601 RIVER ROAD
 CINNAMINSON, NEW JERSEY**



FEATURES:

- 2,994 SQ. FT. TOTAL
- ELECTRICAL SERVICE:
 - 120/240 VOLTS-1 PHASE-150 AMPS
- MECHANICAL SERVICE:
 - GAS HEAT
 - OFFICE AIR CONDITIONED
- CLEAR HEIGHT: 14'

APPROX. ROOM SIZES:

- 500 - VESTIBULE
- 501 - 18'-4" x 17'-1"
- 502 - 15'-2" x 17'-3"
- 503 - 14'-8" x 19'-0"
- 504 - 16'-0" x 12'-3"
- 505 - 16'-0" x 34'-9"
- 506 - 14'-6" x 19'-3"
- 507 - 10'-1" x 11'-3"
- 508 - 15'-11" x 12'-3"
- 509 - 7'-0" x 12'-3"
- 510 - 15'-3" x 11'-3"



Whitesell

One Underwood Court, Delran, New Jersey 08075
 Phone: (856) 764-2600 Web: www.whitesellco.com

UNIT No.

UNIT 5

DATE:

02/22/13

SCALE:

3/32"=1'-0"

2601 RIVER ROAD
 CINNAMINSON, NEW JERSEY