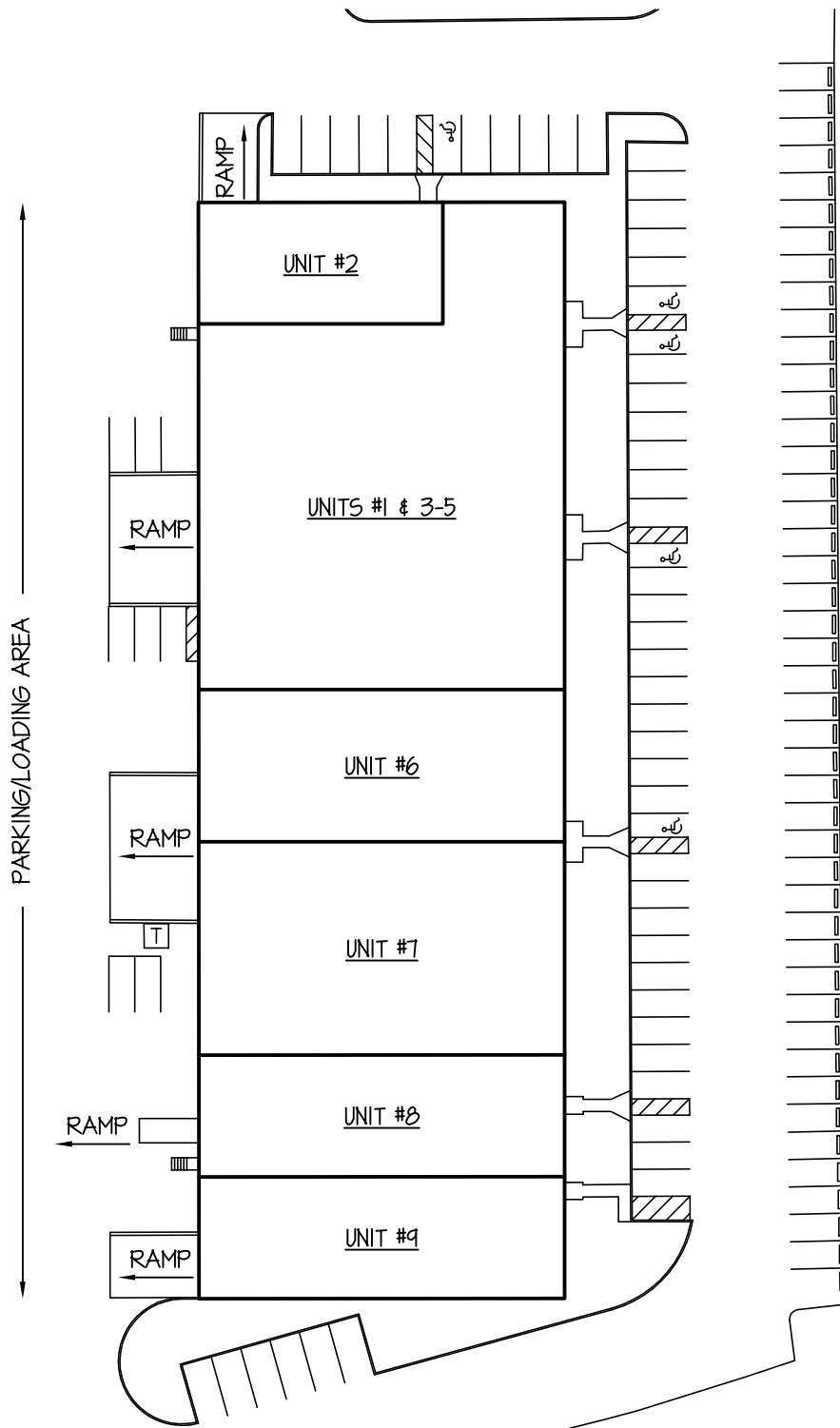


200 Rittenhouse Circle East Bristol, PA



**One Underwood Court, P.O. Box 1605
Delran, New Jersey 08075-0117
(856) 764-2600
E-mail: leasing@whitesellco.com**



FEATURES:

- 43,200 SQ. FT. TOTAL
- ELECTRICAL SERVICE:
 - 120/208V & 265/460V; 1650A
- MECHANICAL SERVICE:
 - GAS HEAT
 - OFFICE AIR CONDITIONED
- PUBLIC WATER & SEWER
- CLEAR HEIGHT: - 20'-0"
- (12) 8'-0" x 9'-0" DOCK DOORS
- (6) 10'-0" x 14'-0" DRIVE-IN DOORS
- 105 PARKING SPACES
- TYPICAL STRUCTURAL BAY:
 - 44'-0" x 40'-0"
- ZONING: P-1 (PLANNED INDUSTRIAL)

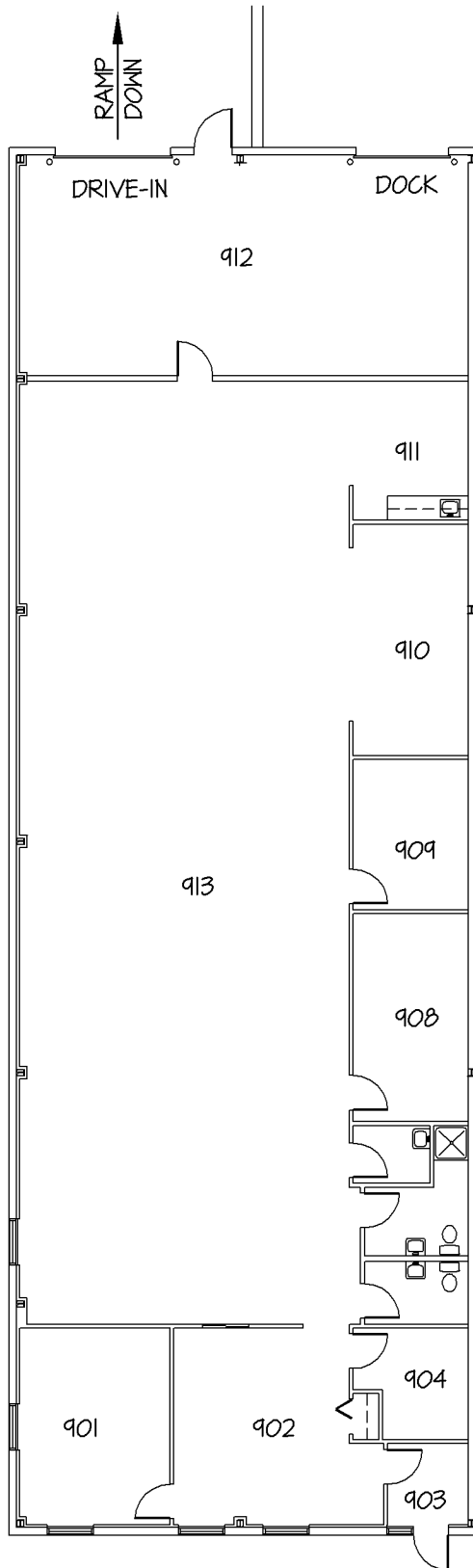


Whitesell

One Underwood Court, Delran, New Jersey 08075
 Phone: (856) 764-2600 Web: www.whitesellco.com

UNIT No.	DATE:	SCALE:
SITE	02/19/13	1" = 60'

**200 RITTENHOUSE CIRCLE EAST
 BRISTOL, PA.**



FEATURES:

- 4,810 SQ. FT. TOTAL
OFFICE: 4,070 SQ. FT.
WAREHOUSE: 740 SQ. FT.
- ELECTRICAL SERVICE:
- 120/208V & 265/460V; 200A
- MECHANICAL SERVICE:
- GAS HEAT
- OFFICE AIR CONDITIONED
- TYPICAL STRUCTURAL BAY:
- 40'-0" x 40'-0"
- CLEAR HEIGHT: - 20'-0"
- (1) 8'-0" x 9'-0" DOCK DOOR
- (1) 10'-0" x 14'-0" DRIVE-IN DOOR

APPROX. ROOM SIZES:

- 901 - 12'-0" x 17'-0"
- 902 - 15'-2" x 17'-0"
- 903 - 7'-0" x 7'-0"
- 904 - 7'-6" x 9'-8"
- 908 - 10'-0" x 14'-0"
- 909 - 10'-0" x 13'-6"
- 910 - 10'-0" x 20'-6"
- 911 - 26'-0" x 9'-0"
- 912 - 38'-10" x 19'-0"
- 913 - 28'-6" x 81'-6"



One Underwood Court Delran, New Jersey 08075
(856) 764-2600

UNIT No. UNIT 9	DATE: 11/28/12	SCALE: 1/16" = 1'-0"
---------------------------	--------------------------	--------------------------------

**200 RITTENHOUSE CIRCLE - EAST
BRISTOL, PENNSYLVANIA**